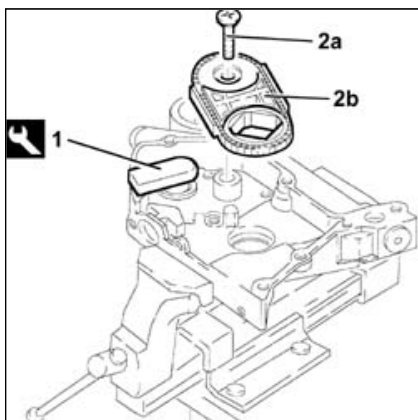


ALFA 159 1.9 JTD 16V ENGINE OIL PUMP, REMOVED - CHECK AT BENCH 1084B18



Removing ([Refitting](#))

Position the engine oil pump in the vice fitted with protective jaws.

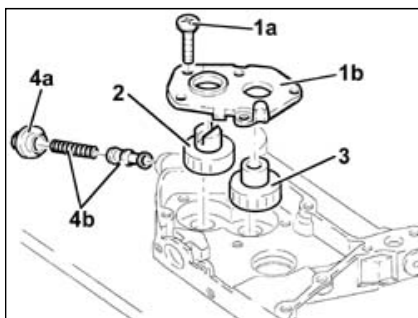
1. Fit the tool.

	Description	Code	Function
1	Counter-torque/Template	1.870.799.000	Oil pump timing

2. Undo the (left hand) bolt (2a) and remove the oil pump drive chain assembly (2b).

Remove the tool.

	Description	Code	Function
.	Counter-torque/Template	1.870.799.000	Oil pump timing



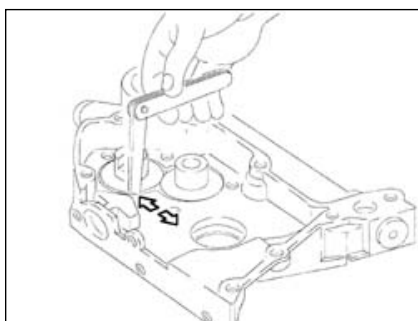
1. Undo bolts (1a) and remove the oil pump cover (1b).

2. Remove the driven gear.

3. Remove the drive gear.

4. Undo the cap (4a) and release the oil pressure relief valve (4b).

Remove the crankshaft front oil seal.



Refitting ([Removing](#))

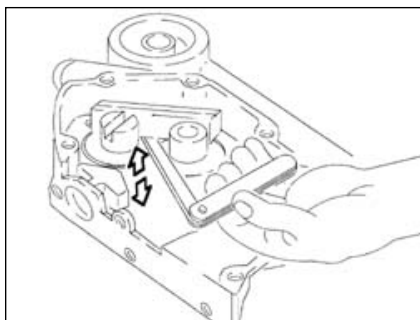
Check the oil pump drive chain assembly for wear and, if necessary, replace it.

Check that the radial clearance between the gears and the pump casing is within the recommended limits; if this is not the case, replace the engine oil pump.

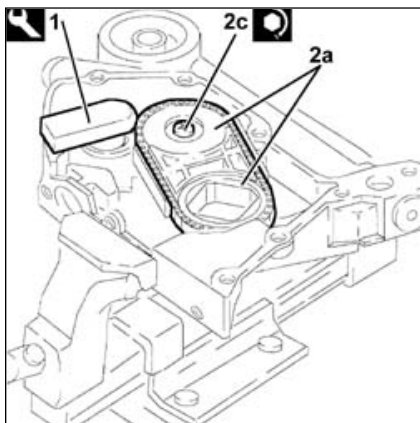
	Subject	Value
.	Oil/water pump driveshaft seal	mm
-	Radial clearance between gears and pump casing	0.110 - 0.180

Check that the endfloat between the top of the gears and the oil pump cover support plane is within the recommended values; if this is not the case, replace the engine oil pump.

	Subject	Value
.		



.	Oil/water pump driveshaft seal	mm
-	Endfloat between top of gears and pump casing support plane	0.016 - 0.086



Check that the height of the oil pressure relief valve spring is within the recommended values; if not, replace the spring.

	Subject	Value
.	Oil/water pump driveshaft seal	mm
-	Height of engine oil pressure relief valve spring	11.96 - 12.76
	Subject	Value
.	Oil/water pump driveshaft seal	mm
-	Height released	49.5

Fit the oil pressure relief valve and tighten the nut.

	Value daNm	Fastening	Component	Ø
.	1.6 ÷ 2.0	Nut	PRESSURE RELIEF VALVE ENGINE OIL PUMP	-

Fit the drive gear.

Fit the driven gear.

Fit the oil pump cover and tighten the fixing bolts to the recommended torque.

	Value daNm	Fastening	Component	Ø
.	0.8 ÷ 1.2	Bolts	OIL/COOLANT PUMP DRIVESHAFT SEAL	-



Manually rotate the gears to check that they turn without sticking.

Position the engine oil pump in the vice fitted with protective jaws.

1. Fit the tool.

	Description	Code	Function
1	Counter-torque/Template	1.870.799.000	Oil pump timing

2. Fit the oil pump drive chain assembly (2a) and tighten the (left hand) bolt (2c) to the recommended torque.

	Value daNm	Fastening	Component	Ø
2c	4.5 ÷ 5.5	Left hand bolt	OIL PUMP GEARS	M10